

Manually Reading an IMServ Smart Meter

Manufacturer: Elster

Model: AS230

Please follow this guide to manually read your 'Elster AS230' Non Half Hourly Smart Meter:

Press the yellow button (on the left) to access the below information in the set sequence, press the button once to access the next display.

Please note this will vary for different NHH tariffs, this example is typically based on a standard economy seven (Day/Night) tariff. The general sequence remains constant across all NHH tariffs however the quantity of 'TOU' registers can vary between one and six:

Test screen (All black – Segment test)



Current Time



Current Date



TOU 1 (Active kWh Import – Night Rate – Billing Register)



TOU 2 (Active kWh Import – Day Rate - Billing Register)



Cumulative Import (Active kWh Import - Check Total: Sum TOU1 + TOU2)



Cumulative Import (Reactive kVArh Import - LAG)



Month End Maxim Demand (Active KW Import Demand - MD)



Manufacturer: Elster

Model: A1140

Please follow this guide to manually read your 'Elster A1140' Non Half Hourly Smart Meter:

Press the second yellow button on the right to access the below information in the set sequence, press the button once to access the next display.

Please note this will vary for different NHH tariffs, this example is typically based on a standard economy seven (Day/Night) tariff. The general sequence remains constant across all NHH tariffs however the quantity of 'TOU' registers can vary between one and six:

Current Time



Current Date



TOU 1 (Active kWh Import – Night Rate - Billing Register)



TOU 2 (Active kWh Import – Day Rate - Billing Register)



Cumulative Import (Active kWh Import - Check Total - Sum TOU1 + TOU2)



Cumulative Import (Reactive kVArh Import - LAG)



Month End Maxim Demand (Active KW Import Demand - MD)



Manufacturer: EDM I

Model: EDM I Mk10

Please follow this guide to manually read your 'EDMI Mk10' Non Half Hourly Smart Meter:

Press the grey button (labelled 'Display Select') to access the below information in the set sequence, press the button once to access the next display.

Please note this will vary for different NHH tariffs, this example is typically based on a standard economy seven (Day/Night) tariff. The general sequence remains constant across all NHH tariffs however the quantity of 'R' registers can vary between one and six:

Test screen (All black – Segment test)



Current Time



Current Date



R1 - (Active kWh Import – Night Rate – Billing Register)



R2 - (Active kWh Import – Day Rate - Billing Register)



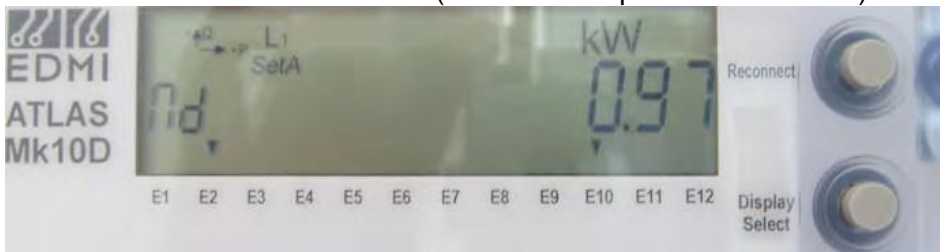
CT - Cumulative Import (Active kWh Import - Check Total - Sum R1 + R2)



TR - Cumulative Import (Reactive kVArh Import - LAG)



ND - Month End Maxim Demand (Active KW Import Demand - MD)



E1 - Additionally, where a meter has been installed at an export site the meter is configured to record the cumulative export wh total, this register is displayed as E1 - This is register records net import and export values (not total generation)



Manufacturer: Elster

Model: Mk7C

Please follow this guide to manually read your 'EDMI Mk7C' Non Half Hourly Smart Meter:

Press the grey button (labelled 'Select') to access the below information in the set sequence, press the button once to access the next display.

Please note this will vary for different NHH tariffs, this example is typically based on a standard economy seven (Day/Night) tariff. The general sequence remains constant across all NHH tariffs however the quantity of 'R' registers can vary between one and six:

Test screen (All black – Segment test)



Current Time



Current Date



R1 - (Active kWh Import – Night Rate – Billing Register)



R2 - (Active kWh Import – Day Rate - Billing Register)



CT - Cumulative Import (Active kWh Import - Check Total. Sum R1 + R2)



TR - Cumulative Import (Reactive kVAh Import - LAG)



ND - Month End Maxim Demand (Active KW Import Demand - MD)



E1 - Additionally, where a meter has been installed at an export site the meter is configured to record the cumulative export wh total, this register is displayed as E1 - This is register records net import and export values (not total generation).

